



1 Path under RR



6 Mall of Louisiana Trailhead



7 Pathway under Picardy Overpass



2 View of Perkins Rowe



8 May need 60' Bridge



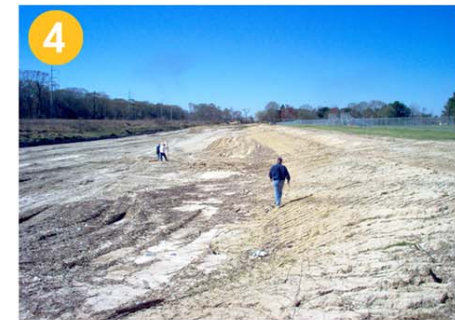
9 Trail by Tuscany Villas



3 Trailhead behind Rave Theater



10 Pathway top of bank



4 Pathway behind St. George Church



5 Pathway under Siegen Overpass

- Concrete Multiuse Trail (12' typ.)
- T Denotes Trailhead Access
- Denotes View Direction



0 1/4 1/2 mi



C.A.P.P. *Update*

June 2008

Wards-Dawson Creek



BREC Planning and Engineering was approved by the BREC Commission on January 24, 2008 to begin a study to determine if creating a multiuse trail along Wards and Dawson creek was feasible. Our goal is to fully study the trail and conceptually work out issues with the landowners and the Department of Public Works before taking the trail to the BREC Commission for further approval. The proposed trail is shown on the attached Wards-Dawson Creek Linear Park Refined Conceptual Plan.



We have completed the following actions:

1. Generally located the proposed path and trailheads.
2. Contacted the land owners and received tentative agreements on the trail concept and location.
3. Walked and inventoried the intended path of the trail and noted areas that require special consideration in design and construction.
4. Developed conceptual path cross-sections and conceptual trailhead plans.
5. Began work on issues of ownership, liability, maintenance, and construction.



Phase 1 of the Pathway will extend along the Wards Creek right-of-way from the Siegen Lane overpass to Bluebonnet Boulevard. More information on BREC's Capital Area Pathways Project can be found online at www.capp-online.org.



It is the BREC mission to provide parks and recreational opportunities for all the citizens of East Baton Rouge Parish.





Before



After



DAWSON CREEK - WARDS CREEK

Pathway Illustration



Before



After



DAWSON CREEK - WARDS CREEK

Pathway Illustration



BREC Planning & Engineering

INSPIRATIONAL PATHWAY IMAGES

